

# Echo Hills Cottages

## Custom Design Process

We use a simple home design process for creative and efficient use of space and materials. Our process allows you to choose from standard design modules, make personalized modifications, and configure the modules for a custom home design. We follow the three standard steps of architectural design, outlined below, to help you create a healthy home environment with optimum energy efficiency and minimal environmental impact.

### 1. Schematic Design

This step is all about fleshing out your dream. We start by helping you to consider your space requirements, budget, lifestyle, aesthetic preferences, etc. We make it easy with the following steps and design examples:

#### a) Choose your base design module

- square, rectangle, octagon...
- one story, two story, or more
- gable, hip, or mono-pitch roof
- porches and decks



#### b) Choose your primary living space

- living area
- dining area
- kitchen
- bathroom



First Floor Plan



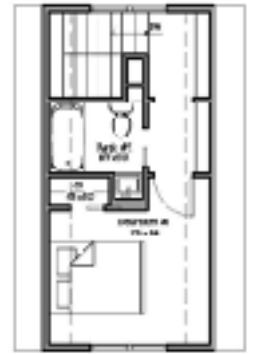
First Floor Plan

### c) Choose your secondary living space

- bedroom suite
- additional bedrooms
- additional bathrooms

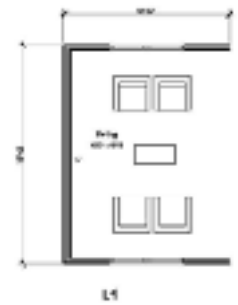


Second Floor Plan



### d) Choose your add on design modules

- extended living area
- extended bedroom suite
- kitchen expansion
- dining nook
- additional bedroom
- office / den



### e) Put everything together

into a conceptual design that works for you



## 2. Design Development

The second step adds detail to the schematic design to establish a plan. Here we will clarify window and door placement, specify construction details, choose materials, and estimate costs.

## 3. Construction Documents

This final step solidifies the plan to get ready to build. Construction documents are prepared for permitting. Suppliers and subcontractors are chosen, and a project management process is implemented.